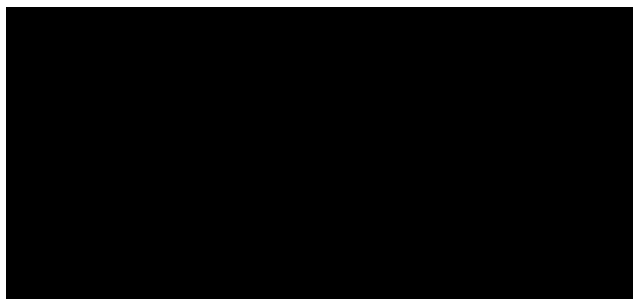


CHARITY REGISTRATION NUMBER: SC015303

Netherlee and Stamperland (Church of Scotland)
Unaudited Financial Statements
31 December 2021



Netherlee and Stamperland (Church of Scotland)

Financial Statements

Year ended 31 December 2021

	Page
Trustees annual report	1
Independent examiner's report to the trustees	13
Statement of financial activities	14
Statement of financial position	15
Notes to the financial statements	16
The following pages do not form part of the financial statements	
Detailed statement of financial activities	30
Notes to the detailed statement of financial activities	32
General Fund Budget	33

Netherlee and Stamperland (Church of Scotland)

Trustees Annual Report

Year ended 31 December 2021

The Trustees present their annual report and financial statements of the charity for the year ended 31 December 2021. The financial statements have been prepared in accordance with the accounting policies set out in pages 16-18 of the accounts and comply with the General Assembly Regulations for Congregational Finance, the Charities and Trustee Investment (Scotland) Act 2005, the Charities Accounts (Scotland) Regulations 2006 (as amended) and Accounting and Reporting by Charities: Statement of Recommended Practice applicable to charities preparing their accounts in accordance with the Financial Reporting Standard applicable in the UK and Republic of Ireland (FRS 102 (effective 1 January 2019)).

OBJECTIVES & ACTIVITIES

The Church of Scotland is Trinitarian in doctrine, Reformed in tradition and Presbyterian in polity. It exists to glorify God and to work for the advancement of Christ's Kingdom throughout the world. As a national Church it acknowledges a distinctive call and duty to bring the ordinances of religion to the people in every parish of Scotland through a territorial ministry. It co-operates with other churches in various ecumenical bodies in Scotland and beyond.

Mission Statement

As part of the Church of Scotland, Netherlee and Stamperland Church is committed to worshipping God, as Father, Son and Holy Spirit; therefore, in the name of Jesus Christ our Lord, we commit ourselves to serve the needs of all people who live in our parish.

We are a church that seeks always to find new ways to love God and our neighbours, and within this mission we aim to –

- Be a place providing regular worship to God.
- Provide a welcoming space for all who are isolated or alone in our parish.
- To identify new projects that serve our community with love, e.g. Monday Lunch Club, Heart for Art, etc.
- Provide a space for groups in the Community to meet.
- Develop new ways of working with families throughout the parish.
- Develop new methods of aiding Pastoral Care within our Community.

The Church seeks a commitment from its members to accept this statement and help realise its Mission.

Coronavirus pandemic

Prior to the coronavirus pandemic we undertook an extensive process of consultation that invited all to meetings for the whole congregation. This work culminated with our Elders' Conference (March 2020) which produced our new Mission Statement. We have been trying to work to this since that time, despite the upset to our lives that Covid has brought. We developed online worship to cope with lockdown and other restrictions, but have found it hard to develop new projects, for example looking at different ways of working with pastoral care. We have experienced a significant drop in income from the congregation during the pandemic, and we have also lost hall users and their income in both buildings. We, like all churches are not attracting new members to our parish, so not only has the pandemic severely affected the life of our church in every way, it has also caused severe disruption to the many voluntary and commercial organisations which made our buildings a busy and vibrant place to be.

Worship

Previous plans to share worship between our two sanctuaries and steadily increase the number of joint services were severely disrupted by Covid. Working within the guidance from Scottish Government and our National Church, we were able to worship with 50 folk (max) and then 100 folk (max) in both sanctuaries as the restrictions began to ease. Mitigations such as social distancing, face masks and hand sanitising were continued throughout 2021.

With the arrival of omicron variant we were asked to cancel our additional Christmas services, and in response to several cases occurring in our community (reflecting the increased transmissibility of this variant) we decided to also cancel regular worship in December and for most of January 2022.

Netherlee and Stamperland (Church of Scotland)

Trustees Annual Report *(continued)*

Year ended 31 December 2021

As we had done during previous lockdowns, we recorded worship to be viewed weekly via a link to our YouTube channel (<https://www.youtube.com/channel/UCxduv5ktG1ctk5Zu4u8WRPQ>) where there are now 600+ of our videos and over the year we had over 4,000 “clicks” / views.

During the year the Kirk Session agreed to a new pattern of worship, and we moved to just one morning service on Sunday 5th September 2021 at 10.30am, and these have been arranged in blocks so that there is equitable use of each sanctuary.

The Presbytery annual statistical return for 2021 shows our Communion Roll at 779 members. This year saw a continued high number of funerals taken by our Minister and Pastoral Assistant and we grieve for all the families and friends affected.

██████████ (Treasurer & Finance Convener)

Sadly towards the end of the year ██████ stepped down to deal with his serious health issues. ██████, a previous Treasurer returned as Interim Treasurer until we employed ██████ as Treasurer from April.

When so much had changed over the years, and so much continued to change, we were very fortunate to have ██████ first as Finance Convener, and then as Treasurer as well. His commitment and willingness to serve the church was exemplary. In truth we will probably never fully know all that he made happen as he went about his duties in a very quiet, steady and diligent way. ██████ passed away in May, a great loss to many, but most importantly for his wife and family.

Communication

We are fortunate that the vast majority of our Kirk Session can be contacted via email and also have access to Zoom. We continued to use this remote video conferencing technology during the first half of 2021 to hold our Kirk Session meetings and many other group meetings. Our Planning & Communication group continued the Newsletter to keep members up to date with the ever changing guidance on worship, as well as other news and stories as activities took place online, and eventually in-person. Connections – our church magazine – returned in December. In this month we also delivered a wooden Christmas decoration to every member as another way of maintaining contact, and encouraging them back to church to place it on the tree in the sanctuary.

We have a new Netherlee and Stamperland website www.nandschurch.org and Netherlee and Stamperland **Facebook page**.

We are indebted to the Elders for their efforts in keeping in touch with their Districts and the wider community during Covid-19.

Youth Organisations

We normally provide accommodation for the Boys’ Brigade, Guides and Scouts; but due to Covid-19 they have often been unable to meet face to face. When they have been able to meet, it has been under the guidance of the Scottish Government and their own Organisation’s rules and guidance, which has often meant a limit on their numbers. Outside of lockdown and Tier 4 some groups did manage limited indoor and outdoor activities, but nothing like their normal calendar of events.

For their efforts during the year, the leaders and helpers deserve to be hugely complimented on becoming ever more inventive in keeping many of their members engaged with a variety of online activities via many different digital platforms.

Sunday Club

They started the year still using video conferencing technology to keep in touch with the children. Treasure Hunts, collecting brown pennies for Glasgow SE Foodbank, a quiz, making a prayer chain, show & tell, Easter cards – all examples of activities to keep them occupied and support the bible work they do. By September they were delighted to be face-to-face again, making semaphore flags communicate across the hall. Good news to see all these great examples of dedicated and talented leaders helping the children to explore the gospel.

Netherlee and Stamperland (Church of Scotland)

Trustees Annual Report *(continued)*

Year ended 31 December 2021

Guild

Due to the members increased vulnerability to Covid-19 the Guild had not met since before March 2020. As restrictions began to ease during 2021 and it was possible to meet in-person again; the Netherlee and Stamperland Guild produced a 2021/22 syllabus with the theme “Look Forward in Faith” with 2021 having the theme “Light & Bushels”. A variety of speakers were lined up and the meeting times were changed to Tuesday (Stamperland) and Thursday (Netherlee) at 2pm.

Education

We normally would organise opportunities for Christian education in the form of **Bible Study** groups but once again – Covid-19 restricted this. A Lent Study group was started in the early part of the year but this had to be done via Zoom. There is a small adult Sunday group (**SHARE**) which carries out in depth studies of the Christian faith and how it can be applied in the modern world, again moving from Zoom to in-person and back to Zoom as guidance changed. The previously cancelled visit to Iona was able to go ahead. The Church and Presbytery provide training for Elders.

We also offer courses in the **Protection of Vulnerable Groups** with the assistance of trainers from the **Safeguarding Office** of the central Church.

The Forum meets once a month with distinguished speakers on their subjects of expertise. These meetings are open to any member of the community and have regular attendances of between 35/50 people and give the audience an opportunity for discussion, asking questions and to increase their knowledge of the subjects discussed. After some successful meetings online using Zoom we began to meet in-person again towards the end of 2021, and dates are in the diary for early 2022.

Facilities for the Community

Our two buildings provided facilities for all ages in the community regardless of whether they are members of our church or not. Over the last two years we should have had the following groups:- Monday Lunch Club, Heart for Art, Scottish Country Dance, Weight Watchers, Baby Sensory, Keep Fit, Mindfulness, Balance Fitness, Pilates, Yoga, Chair Yoga, Sounds International, Crafts, Dancing School, Eastwood Stamp Club, Toddlers, French school class, Enjoy-a-Ball, Clarkston After School Services (CASS) & Breakfast Club.

Covid restrictions during the year meant many of these groups were not running normally, or not running at all. This produced a scenario of reduced income for everyone. It was confirmed that Heart for Art had lost funding and would be unable to return, and Baby Sensory had moved elsewhere. These financial contributions by community users of our premises provide significant help towards our running costs, and we are unsure if the levels will again rise, if and when the pandemic ends.

Social Events

The year started with our monthly virtual Afternoon Tea where members were delivered the tea/scones etc with which to enjoy themselves online with friends. Poppy Scotland used the same model and raised £573. Christian Aid did likewise and along with donations and the online Art Sale raised a magnificent £5,105. November saw Harlequin Youth Theatre performing “All Together Now” in our Stamperland sanctuary. Along with thousands of similar groups across 36 countries they were given free access to the rights to perform this show over Remembrance weekend. As the year drew to a close we were hopeful that we would be able to resume our annual trip to the Transatlantic Sessions at Celtic Connections in January.

Community Support

We have a long-term relationship with St Andrews Scots Kirk in Colombo, Sri Lanka. That Church operates a Trust Fund for Netherlee Cottage, a halfway home for ladies released from the psychiatric wards of the local hospital. We send regular sums of money to assist with the maintenance and running expenses. This year with greatly reduced retiral offerings (or fund raising events) we made this donation from funds.

Netherlee and Stamperland (Church of Scotland)

Trustees Annual Report *(continued)*

Year ended 31 December 2021

PLANS FOR THE FUTURE

Like every church and organisation in the world our plans for the future have been significantly affected by the global coronavirus pandemic. The world that existed when we created our new mission statement at our Elders' Conference in March 2020 no longer exists. We never had the opportunity to build on the enthusiasm for the ideas discussed at that conference. Over what is fast approaching two years, when for much of the time we could only meet remotely, we are now getting clearer about how we can plan for life after Covid-19.

Going concern viability

Our Trustees Meeting was held via Zoom on Wednesday 14th April 2021. Ronnie Mair (Interim Treasurer) responsible for preparing the Financial Review, the Investment Policy & Performance and the Reserves Policy for the Annual Report and Accounts of 2020; concluded his remarks with some observations and comments about looking to the future and the “**going concern viability**” of Netherlee and Stamperland Church.

- Currently we are in a strong financial position, and have sufficient reserves to cover a 12-18 month period, however, should we spend circa £250,000 to £300,000 or more on new roofing at the Netherlee building, our reserves could be decimated.
- In his opinion we need to make a decision about the two buildings. Do we need two? Could one be a worship space, and the other serve a different, perhaps community purpose?
- We may not know the answer now but his advice is we need to start thinking about the questions now, not when our financial position has weakened. We need to look forward and think about the next 5, 10, 15 and maybe 20 years.
- This will not be easy as emotions will get in the way, however, we should make our choices before the funds are all depleted, and consider the choices sooner rather than later.

██████████ (Independent Examiners) stated he was happy to sign off the Annual Report & Accounts for 2020. He then also addressed our future and the “**going concern viability**” of Netherlee and Stamperland Church. In his opinion our reserves are sufficient to cope with a 12-18 month period should that be necessary.

His concern is that 2-3 years later that might not be the case. Currently our reserves are healthy because two financially strong churches have become one. However, it would only take one significantly major expense to alter the picture to one that is not so rosy. He suggests we should review our financial situation quarterly to ensure we maintain an accurate picture of our financial position, and going forward look to maximise income and reduce expenditure.

RISK MANAGEMENT

Following the comments made by our Interim Treasurer and Independent Examiner concerning our “**going concern viability**” at the Trustees Meeting in early April; the Trustees began to consider and review these points carefully and thoroughly at our Kirk Session meetings during the remainder of 2021.

The discussions and decisions of these meetings are summarised and noted below.

Kirk Session (19/04) wrestling with future worship pattern to be shared between our two sanctuaries; **other issues were raised** –

- *Question of “going concern viability” in relation to retaining two buildings . . . is a nettle we need to grasp, but not tonight, nor via Zoom . . . Small Working Group formed (4 Elders, chair ██████████ to look at this issue and prepare questions for Kirk Session . . . there are rarely overnight answers to such issues . . . Covid will impact the future use of our buildings.*
- *Netherlee roof project . . . quotation received from NDM (Quantity Surveyors) to prepare a detailed cost estimate for the roof repair works, hopefully to be presented to June Kirk Session. Scott asked were we willing to accept the proposal to engage NDM (Quantity Surveyors) . . . majority agreed.*

Netherlee and Stamperland (Church of Scotland)

Trustees Annual Report *(continued)*

Year ended 31 December 2021

Kirk Session (07/06) reviewing our next steps with feedback from the **Small Working Group (SWG)** –

- 2020 budget had predicted a surplus of £11/12k . . . unexpectedly income dropped by £49K during 2020, £44k directly due to Covid . . . SWG suggested that future hall rental income is likely to be lower than expected . . . projections of the size of our membership over the next 10/15 years are not good . . . work will be required to get folk back to church after Covid.
- SWG felt we needed help turning our vision into a plan and of the two options from the Presbytery Clerk the preference was to use Designed To Succeed . . . they would visit our sites, speak to our folk, and take a detailed look at our fabric and finances; and from this present us with an action plan that would help us deliver our mission statement . . . majority agreed.
- Netherlee roof project . . . more accurate costing . . . still provisional . . . circa £950,000 for both sanctuary and large hall . . . if approved, subject to tendering . . . Tony optimistic finance could be raised – HES grant (£200,000), other grants (£50,000), surplus manse (£450,000) and reserves (£250,000) – total £950,000. Permission to progress project . . . majority agreed.
- Proposal from Designed To Succeed . . . aid our decision making in September . . . inviting an “outside” resource was seen overall as positive . . . would look at our mission and fabric/finance to see if there is a good match between them . . . report should contain advice and/or suggestions that will help us plan our way forward . . . majority agreed.
- Our situation v the bigger picture . . . major decisions ahead for the national church . . . coming to terms with General Assembly proposal to cut number of ministry posts in Scotland from 800/850 staffed posts to 600 by 2025 . . . will impact our ministry in this area . . . period of adjustment over next 2 years . . . Glasgow Presbytery posts reducing from about 160 to 84.

Kirk Session (06/09) review of the **Designed to Succeed** report and an update on the **Netherlee roof project** –

- Designed to Succeed . . . buildings/finance serve our Gospel work . . . suggested other investigation into reasons for water pooling and ingress re Netherlee roof . . . consider sale of surplus manse . . . feasibility study on Stamperland building . . . opportunities to develop new initiatives re worship and additional funding streams . . . very well positioned site . . . sanctuary area that could be developed into a 7 day a week multipurpose space . . . install a new kitchen and/or café servery and relocate toilets . . . access is a major challenge in Stamperland building, but worth looking at to see if solutions can be found.
- Netherlee roof project . . . Presbytery & General Trustees conversations all positive . . . satisfies one of the recent emergency criteria . . . works related to “further research / design fault / gutter solution” included in report presented to previous Session and solving this problem included in indicative budget for project . . . next step is putting the work out to tender at which point we would know the actual cost . . . then back to the Session (possibly November) to get final go ahead . . . important to be aware that by approving in principle tonight we are not making an irretrievable decision.
- A proposal of two parts was presented to the Kirk Session by [REDACTED] –
 - [REDACTED] seeking approval in principle to continue with the roof project for the sanctuary at Netherlee by continuing to gather grant aid, selling our surplus manse, and starting our own fund raising initiatives as this is a pre-condition of many of the smaller grant aiders.
 - [REDACTED] asking to commission the feasibility study recommended by Designed to Succeed on the Stamperland building in a matter of a few weeks to understand the options and costs of change that could help increase our hall rental income.

This proposal of two parts was seconded by two elders, and the Moderator asked Session if they were happy with the proposal that had been proposed and seconded . . . majority agreed . . . when explicitly asked, nobody wished to register an objection.

Netherlee and Stamperland (Church of Scotland)

Trustees Annual Report *(continued)*

Year ended 31 December 2021

Kirk Session (18/10) updates on the Netherlee **roof project** and the Stamperland **feasibility study** –

Where we are . . . concerns over our purpose and trajectory . . . potential building costs in excess of £1.4m . . . congregation struggling to attract people to new roles such as Session Clerk, Treasurer, Fabric Convenor, Elders, and volunteers in general; and new members . . . forecasting deficit of approximately £10-15k . . . uncertainty caused by Presbytery Plan . . . all explaining why it is not easy for us to make difficult decisions . . . we need to discuss and clarify a number of important points –

- *Need to commit to working as one parish . . . option 1 rearrange everything into our new parish structure . . . option 2 carry on with the existing structure . . . [redacted] wished for option 1 . . . asked Session who is with me . . . majority agreed.*
- *What our church is for . . . a place for traditional worship . . . to provide service and care for our community . . . option 1 carry on trying to replicate the former tasks and missions . . . option 2 focus on a limited selection of missionary commitments . . . mixed views on dropping some of our current commitments . . . where do we find leadership and volunteers for the new projects . . . review after 2/3 years?*
- *Turning our attention to the subject of our buildings . . . Netherlee roof project as previously reported is projected to be very close to £1m . . . re-configuration of the Stamperland sanctuary is thought to be in the region of £300-400k . . . it is beyond doubt that issues surrounding our buildings and potential solutions are going to cost large amounts of money . . . prior to Union our yearly rental income was between £30-40k . . . then came Covid-19 and income from members' givings and hall rental both reduced . . . without additional income we have to accept that such costs are unsustainable . . . option 1 we only invest in one building going forward, doing the best to make money out of the other building . . . option 2 we move to just one building to save costs . . . example of the complex issues discussed – church cafés and/or community facilities developed to generate income tend to work well in deprived areas where there is often little competition; we are located in an affluent area surrounded by many options for hall rental and getting a cup of coffee and cake; and finally, who would run such a venture – more volunteers or paid staff . . . closing a building will result in collateral damage to our membership . . . some feel a decision is needed soon . . . Scott proposed a small working group of 5/6 elders to review the issue and present their findings and recommendation to Session in December with a view to sharing it with the congregation in January 2022.*
- *Netherlee roof project . . . Tony sought approval to move to a full specification of works and to a tender process to address the issues unanimously identified by our professional advisers and outstanding now for 10 years, instructing our Finance Committee to find the funds out of available resources . . . **Scott began to question whether we could decide on the roof this evening when a significant proportion of the Session intimated by acclamation that they were ready to do so** . . . first we asked those in favour to stand (30 counted), followed by those against to stand (18 counted), and finally for any abstentions to stand (1 counted) as more voted yes than no, **Scott announced the proposal was approved.***
- *Scott asked for volunteers for the small working group mentioned earlier to review our buildings. John Montgomery, [redacted] volunteered. This became the Building's Future Group which met twice and then intimated they would be ready to present their findings and recommendation to the Kirk Session in January 2022, and if required to the full congregation thereafter.*

Netherlee and Stamperland (Church of Scotland)

Trustees Annual Report *(continued)*

Year ended 31 December 2021

FINANCIAL REVIEW

The financial results for the year were affected by the global coronavirus pandemic. Income from all sources (page 18) was down by £14,158. The General Fund Budget for the year showed a shortfall of £2,756 (page 32). We ended 2021 with a shortfall on general funds of £10,299 without any transfer to the Fabric Reserve Fund (FRF).

The income from offerings from all sources was in deficit by £9,370 and income from the Use of Premises was down by £1,077.

Expenditure was below budget by £1,953. The main movements came under Cleaning and Laundry up £2,629 and Heating and Lighting down £3,188. These savings were made due to our buildings being closed for much of the year. £7,512 was transferred this year from those funds that receive dividends and interest as our Ministries and Mission allocation is based on that income which does not appear in the General Fund but the individual Reserve and Trust Funds.

The value of our Reserve Funds decreased by £2,423 to £1,089,078 at the year-end; this includes £450,000 from the value of the manse.

The Trustees acknowledge with gratitude the legacies totalling £2,608 received in 2021 from the estates of the late Gavin Rodger and the late Ron Dobson.

INVESTMENT POLICY & PERFORMANCE

The Investment Committee continues to monitor the investment performance of our investments, both with Hargreaves Lansdown and The Church of Scotland Investment Trust.

Investments held in the Church of Scotland Investors Trust are in their Growth, Income and Deposit Funds.

The investment policy of the Trustees is to ensure that the capital value of those funds not required for use in the short term is maintained, whilst those funds required in the short term are invested for income generation. The Church of Scotland Investors Trust does provide the level of portfolio management, supervision, and spread of risk the Trustees consider necessary to support the investment policy.

The criteria for the Hargreaves Lansdown investment is to increase the capital value of this fund, by at least inflation with a minimum of 3%, coupled with an annual dividend income in excess of bank deposit rates, circa 3%, whilst adopting a low risk approach. Despite the global coronavirus pandemic and the economic uncertainty it has created, the market value of investments has risen during the year to £383,341 (2020 - £363,720) (page 15).

As the cash balances/deposits stood at circa £249,749 at 31st December 2021, we have more than sufficient resources to meet the projected expenditure in the budget for the General Fund. It is anticipated that we will need to sell some of our investments in the current year to meet anticipated roof repairs to the Netherlee Sanctuary.

Netherlee and Stamperland (Church of Scotland)

Trustees Annual Report *(continued)*

Year ended 31 December 2021

RESERVES POLICY

It is the Trustees' policy to hold reserves of at least 12 months expenditure in the unrestricted funds. Reserves at the year-end held in unrestricted free funds were £585,936 which is higher than our target range. Given the financial uncertainty arising from the current pandemic, the Trustees consider that the level of reserves is a positive factor and provides additional financial support into the future.

The balance on the unrestricted designated funds amounts to £459,876. The Trustees consider this balance is appropriate.

The Church also holds £43,266 (pages 15 & 25) of restricted funds at the end of the year, which has been provided for the purposes specified in Note 19.

STRUCTURE GOVERNANCE & MANAGEMENT

Governing Document

Netherlee and Stamperland (Church of Scotland) is a registered charity (SC015303) and is administered in accordance with the terms of the Unitary Deed of Constitution.

It is subject to the Acts and Regulations of the General Assembly of the Church of Scotland. Its management is controlled by one court – the Kirk Session – responsible for both spiritual and temporal affairs.

Recruitment and Appointment of Trustees

All Trustees are members of the Kirk Session, with the exception of Associate Elders – who have no voting power but are able to participate in the discussions of the Kirk Session.

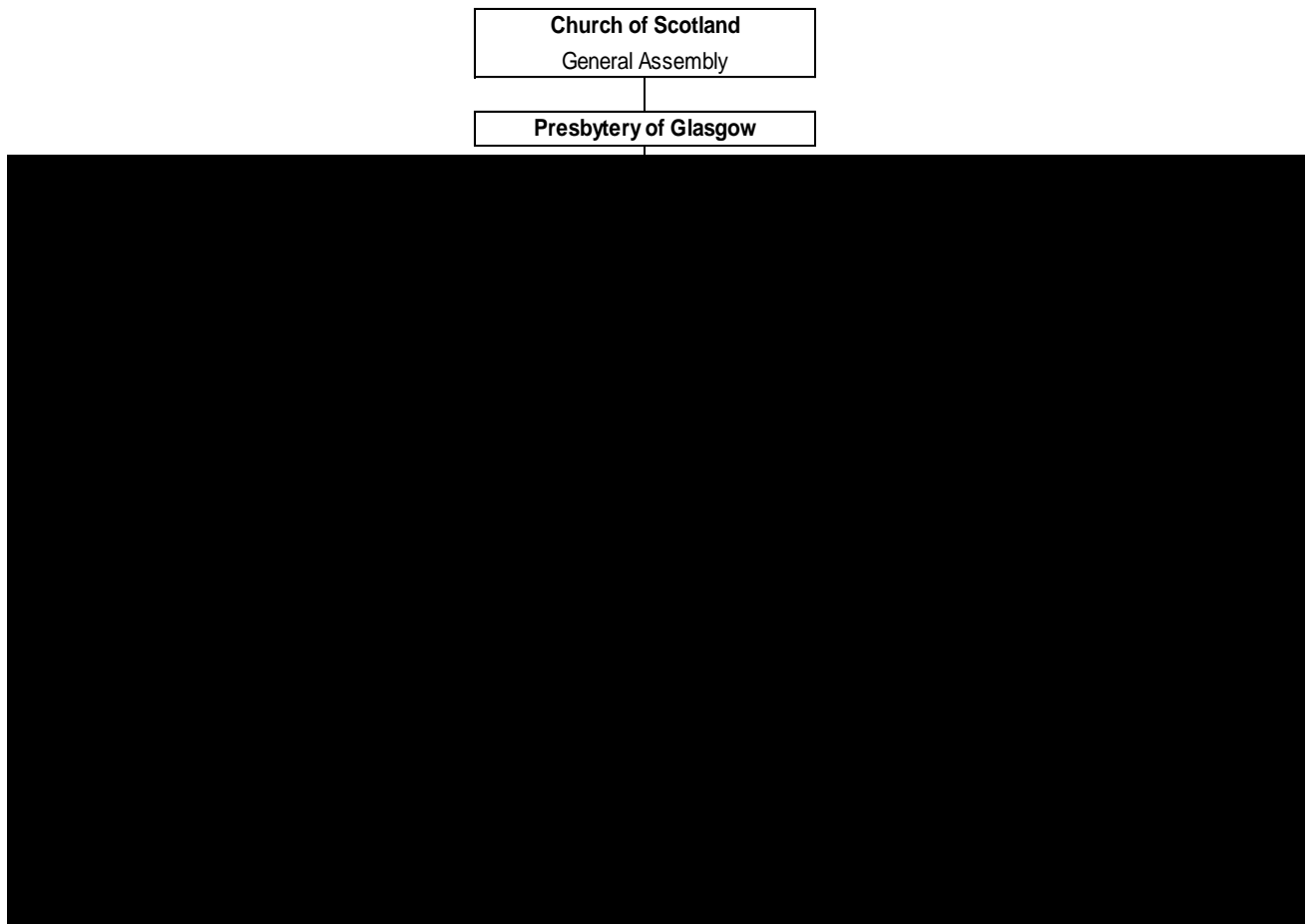
The Kirk Session members are the Elders of the church and are chosen from those members who are considered to have the appropriate gifts and skills. The minister, who is a member of the Kirk Session is elected by the congregation and inducted by the Presbytery.

Netherlee and Stamperland (Church of Scotland)

Trustees Annual Report *(continued)*

Year ended 31 December 2021

Organisational Structure



The Kirk Session is moderated by the Minister and meets formally 5 times a year. It is responsible for all affairs within the church under the Unitary Constitution. Additional meetings are arranged as required.

Responsibilities are delegated to the Finance Committee (bi-monthly), the Fabric Committee (monthly) and an additional 5 groups - Worship & Adult Education, Children & Youth Ministry, Mission, Planning & Communication and Pastoral Care – who meet 4 to 5 times between Kirk Session meetings.

REFERENCE & ADMINISTRATIVE INFORMATION

Charity Name: Netherlee and Stamperland (Church of Scotland)

Charity Registration Number: SC015303
Congregational Number: 161065

[Redacted text block]

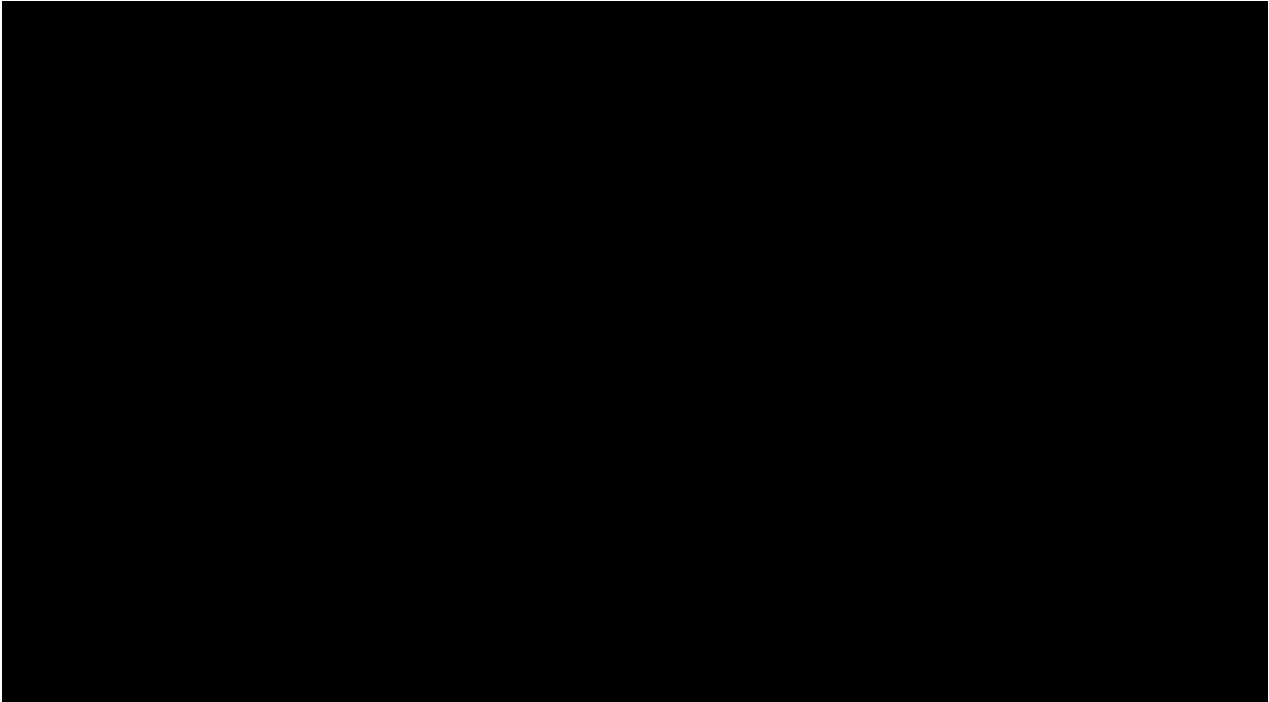
Netherlee and Stamperland (Church of Scotland)

Trustees Annual Report *(continued)*

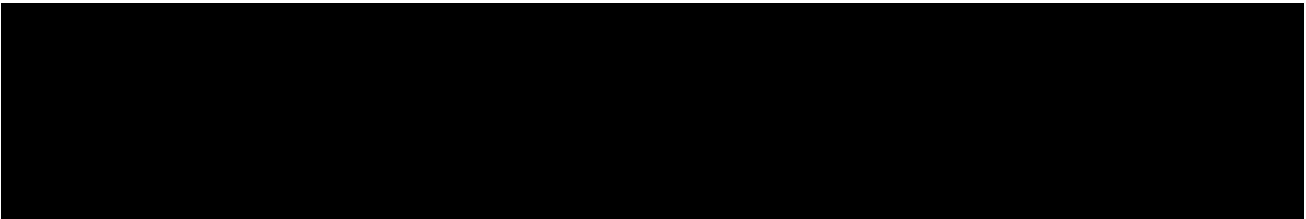
Year ended 31 December 2021

TRUSTEES

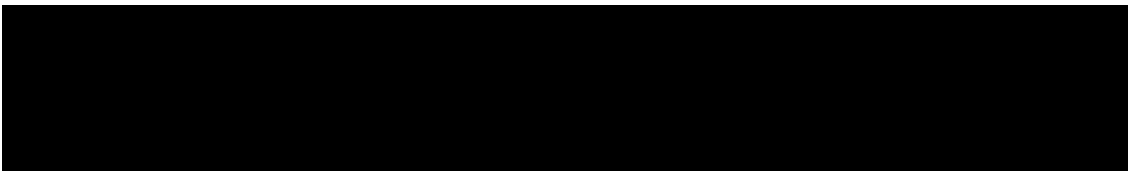
Kirk Session – Active Elders:



Kirk Session – Associate Elders:



Inactive Elders:



Netherlee and Stamperland (Church of Scotland)

Trustees Annual Report *(continued)*

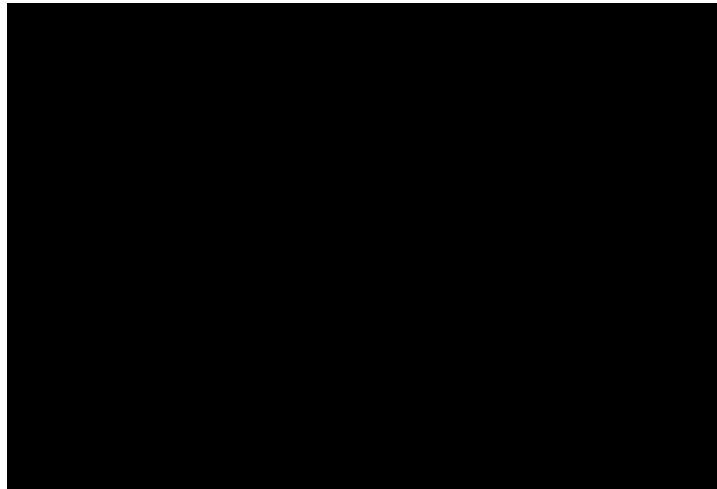
Year ended 31 December 2021

Principal Office Bearers:

Minister
Session Clerk
Church Treasurer

Principal Office

Independent Examiner



Bankers

Bank of Scotland
20 Busby Road, Clarkston, Glasgow G76 7XH

Netherlee and Stamperland (Church of Scotland) is indebted to all Office Bearers, Trustees and organisation leaders, who give of their time and talents on a voluntary basis to manage and execute the Church's activities.

Netherlee and Stamperland (Church of Scotland)

Trustees Annual Report *(continued)*

Year ended 31 December 2021

STATEMENT OF TRUSTEES RESPONSIBILITIES IN RELATION TO THE FINANCIAL STATEMENTS

The charity Trustees are responsible for preparing a Trustees' Annual Report and financial statements in accordance with applicable law and United Kingdom Accounting Standards (United Kingdom Generally Accepted Accounting Practice).

The law applicable to charities in Scotland requires the charity Trustees to prepare financial statements for each year, which show a true and fair view of the state of affairs of the charity and of the incoming resources, and application of resources of the charity for that period.

In preparing those financial statements, the Trustees are required to:

- Select suitable accounting policies and then apply them consistently;
- Observe the method and principles in the applicable Charities SORP;
- Make judgements and estimates that are reasonable and prudent;
- State whether applicable accounting standards and statements of recommended practise have been followed subject to any departures disclosed and explained in the financial statements; and
- Prepare the financial statements on the going concern basis unless it is inappropriate to presume that the charity will continue in operational existence.

The Trustees are responsible for keeping proper accounting records, which disclose with reasonable accuracy at any time the financial position of the charity and to enable them to ensure that the financial statements comply with the Charities and Trustee Investment (Scotland) Act 2005 and the Charities Accounts (Scotland) Regulations 2006 (as amended). They are also responsible for safeguarding the assets of the charity and hence for taking reasonable steps for the prevention and detection of fraud and other irregularities.

The Trustees are responsible for the maintenance and integrity of the charity and financial information on the congregation's website. Legislation in the United Kingdom governing the preparation and dissemination of financial statements may differ from legislation in other jurisdictions.

Approved by the Trustees on 9 March 2022 and signed on their behalf,

[Redacted signature block]

[Redacted signature block]

Netherlee and Stamperland (Church of Scotland)

Independent Examiner's Report to the Trustees of Netherlee and Stamperland (Church of Scotland)

Year ended 31 December 2021

I report to the trustees on my examination of the financial statements of Netherlee and Stamperland (Church of Scotland) ('the charity') for the year ended 31 December 2021.

Responsibilities and basis of report

As the trustees of the charity you are responsible for the preparation of the financial statements in accordance with the requirements of the Charities and Trustee Investment (Scotland) Act 2005 (the '2005 Act') and the Charities Accounts (Scotland) Regulations 2006 (as amended). You are satisfied that your charity is not required by charity law to be audited and have chosen instead to have an independent examination.

I report in respect of my examination of the charity's financial statements as carried out under section 44(1)(c) of the 2005 Act. In carrying out my examination I have followed the requirements of Regulation 11 of the Charities Accounts (Scotland) Regulations 2006 (as amended).

Independent examiner's statement

Since the charity has prepared its accounts on an accruals basis your examiner must be a member of a body listed in Regulation 11(2) of the Charities Accounts (Scotland) Regulations 2006 (as amended). I can confirm that I am qualified to undertake the examination because I am a registered member of ICAS which is one of the listed bodies.

I have completed my examination. I confirm that no matters have come to my attention giving me cause to believe that in any material respect:

1. accounting records were not kept as required by section 44(1)(a) of the 2005 Act and Regulation 4 of the Charities Accounts (Scotland) Regulations 2006 (as amended); or
2. the financial statements do not accord with those records; or
3. the financial statements do not comply with the accounting requirements of Regulation 8 of the Charities Accounts (Scotland) Regulations 2006 (as amended).

I have no concerns and have come across no other matters in connection with the examination to which attention should be drawn in this report in order to enable a proper understanding of the accounts to be reached.



Independent Examiner

Clark Andrews Limited
4 Eaglesham Road
Clarkston
Glasgow
G76 7BT

09/03/2022

Netherlee and Stamperland (Church of Scotland)

Statement of Financial Activities

Year ended 31 December 2021

	Note	2021			2020		Total funds £
		Unrestricted funds £	Restricted funds £	Total funds £	Unrestricted funds £	Restricted funds £	
Income and endowments							
Donations and legacies	4	228,149	902	229,051	234,786	8,423	243,209
Charitable activities	5	1,015	–	1,015	790	–	790
Other trading activities	6	21,056	–	21,056	15,574	–	15,574
Investment income	7	9,642	379	10,021	14,008	1,006	15,014
Other income	8	10,841	–	10,841	9,864	–	9,864
Total income		<u>270,703</u>	<u>1,281</u>	<u>271,984</u>	<u>275,022</u>	<u>9,429</u>	<u>284,451</u>
Expenditure							
Expenditure on raising funds:							
Costs of raising donations and legacies	9	193	–	193	263	–	263
Expenditure on charitable activities	10,11	294,595	4,034	298,629	330,471	12,903	343,374
Total expenditure		<u>294,788</u>	<u>4,034</u>	<u>298,822</u>	<u>330,734</u>	<u>12,903</u>	<u>343,637</u>
Net expenditure before gains and losses on investments							
		(24,085)	(2,753)	(26,838)	(55,712)	(3,474)	(59,186)
Net gains/(losses) on investments	12	24,621	(206)	24,415	(23,765)	246	(23,519)
Net expenditure and net movement in funds		<u>536</u>	<u>(2,959)</u>	<u>(2,423)</u>	<u>(79,477)</u>	<u>(3,228)</u>	<u>(82,705)</u>
Reconciliation of funds							
Total funds brought forward		1,045,276	46,225	1,091,501	1,124,753	49,453	1,174,206
Total funds carried forward		<u>1,045,812</u>	<u>43,266</u>	<u>1,089,078</u>	<u>1,045,276</u>	<u>46,225</u>	<u>1,091,501</u>

The statement of financial activities includes all gains and losses recognised in the year. All income and expenditure derive from continuing activities.

Netherlee and Stamperland (Church of Scotland)

Balance Sheet

31 December 2021

	Note	2021 £	2020 £
Fixed assets			
Tangible fixed assets	15	450,000	450,000
Investments	16	<u>383,341</u>	<u>363,720</u>
		833,341	813,720
Current assets			
Debtors	17	11,748	13,336
Cash at bank and in hand		<u>249,749</u>	<u>270,721</u>
		261,497	284,057
Creditors: amounts falling due within one year	18	<u>5,760</u>	<u>6,276</u>
Net current assets		<u>255,737</u>	<u>277,781</u>
Total assets less current liabilities		<u>1,089,078</u>	<u>1,091,501</u>
Net assets		<u>1,089,078</u>	<u>1,091,501</u>
Funds of the charity			
Restricted funds		43,266	46,225
Unrestricted funds		<u>1,045,812</u>	<u>1,045,276</u>
Total charity funds	19	<u>1,089,078</u>	<u>1,091,501</u>

These financial statements were approved by the trustees and authorised for issue on 9 March 2022, and are signed on behalf of the board by:



Session Clerk

Minister

Netherlee and Stamperland (Church of Scotland)

Notes to the Financial Statements

Year ended 31 December 2021

1. General information

The charity is a public benefit entity and a registered charity in Scotland and is unincorporated. The address of the principal office is The Church Office, 130 Ormonde Avenue, Netherlee, Glasgow, G44 3SL.

2. Statement of compliance

These financial statements have been prepared in compliance with FRS 102, 'The Financial Reporting Standard applicable in the UK and the Republic of Ireland', the Statement of Recommended Practice applicable to charities preparing their accounts in accordance with the Financial Reporting Standard applicable in the UK and Republic of Ireland (FRS 102) (Charities SORP (FRS 102)) and the Charities and Trustee Investment (Scotland) Act 2005 and the Charity Accounts (Scotland) Regulations 2006 (as amended).

3. Accounting policies

Basis of preparation

The financial statements have been prepared on the historical cost basis, as modified by the revaluation of certain financial assets and liabilities and investment properties measured at fair value through income or expenditure. The financial statements are prepared in sterling, which is the functional currency of the entity.

Going concern

There are no material uncertainties about the charity's ability to continue.

Fund accounting

Unrestricted funds are available for use at the discretion of the trustees to further any of the charity's purposes.

Designated funds are unrestricted funds earmarked by the trustees for particular future projects or commitment.

Restricted funds are subjected to restrictions on their expenditure declared by the donor or through the terms of an appeal.

Incoming resources

All income is included in the statement of financial activities when entitlement has passed to the charity, it is probable that the economic benefits associated with the transaction will flow to the charity and the amount can be reliably measured. The following specific policies are applied to particular categories of income:

Income from donations or grants is recognised when there is evidence of entitlement to the gift, receipt is probable and its amount can be measured reliably.

Netherlee and Stamperland (Church of Scotland)

Notes to the Financial Statements *(continued)*

Year ended 31 December 2021

3. Accounting policies *(continued)*

Incoming resources *(continued)*

Legacy income is recognised when receipt is probable and entitlement is established.

Income from donated goods is measured at the fair value of the goods unless this is impractical to measure reliably, in which case the value is derived from the cost to the donor or the estimated resale value. Donated facilities and services are recognised in the accounts when received if the value can be reliably measured. No amounts are included for the contribution of general volunteers.

Resources expended

Expenditure is recognised on an accruals basis as a liability is incurred. Expenditure includes any VAT which cannot be fully recovered, and is classified under headings of the statement of financial activities to which it relates:

Expenditure on raising funds includes the costs of all fundraising activities, events, non-charitable trading activities, and the sale of donated goods. Expenditure on charitable activities includes all costs incurred by a charity in undertaking activities that further its charitable aims for the benefit of its beneficiaries, including those support costs and costs relating to the governance of the charity apportioned to charitable activities.

Other expenditure includes all expenditure that is neither related to raising funds for the charity nor part of its expenditure on charitable activities.

Tangible assets

The charity has the right to occupy and use for its charitable objects certain tangible fixed assets, including the Church and halls, vested in the Church of Scotland General Trustees. No consideration is payable for the use of these assets. Expenditure incurred on the repair and maintenance of these assets is charged as resources expended in the Statement of Financial Activities in the period in which the liability arises.

The manse which is vested in local trustees is included at market value as estimated by an independent valuer (CORUM) every 3 years (last done in 2019).

All other tangible fixed assets costing in excess of £2,500 having a value to the charity greater than one year, other than those acquired for specific purposes, are capitalised. Buildings are not depreciated on the grounds of immateriality. The properties are maintained to a high standard and their estimated residual values are not materially different from their carrying values. Other fixed assets are depreciated on a straight line basis to write off the cost or initial value, less residual value, of tangible fixed assets over their estimated useful lives.

Investments

Fixed asset investments are stated at market value at the balance sheet date. Unrealised gains and losses represent the difference between the market value at the beginning and end of the financial year or, if purchased in the year, the difference between cost and market value at the end of the year. Realised gains and losses represent the difference between the proceeds on disposal and the market value at the start of the year or cost if purchased in the year.

Netherlee and Stamperland (Church of Scotland)

Notes to the Financial Statements *(continued)*

Year ended 31 December 2021

3. Accounting policies *(continued)*

Taxation

Netherlee and Stamperland (Church of Scotland) is recognised as a charity for the purposes of applicable taxation legislation and is therefore not subject to taxation on its charitable activities. The charity is not registered for VAT and resources expended therefore include irrecoverable input VAT.

4. Donations and legacies

	Unrestricted Funds £	Restricted Funds £	Total Funds 2021 £
Donations			
Weekly Freewill Offering	21,994	–	21,994
Gift Aid	145,914	–	145,914
Ordinary Offering	4,346	–	4,346
Tax Recovered on Gift Aid	37,318	59	37,377
Contribution from Congregational Organisations	222	–	222
Organisational income	–	843	843
Other	15,747	–	15,747
Legacies			
Legacies	2,608	–	2,608
	<u>228,149</u>	<u>902</u>	<u>229,051</u>

	Unrestricted Funds £	Restricted Funds £	Total Funds 2020 £
Donations			
Weekly Freewill Offering	24,598	–	24,598
Gift Aid	153,417	–	153,417
Ordinary Offering	2,995	–	2,995
Tax Recovered on Gift Aid	39,052	135	39,187
Contribution from Congregational Organisations	1,620	–	1,620
Organisational income	–	6,961	6,961
Other	2,637	1,327	3,964
Legacies			
Legacies	10,467	–	10,467
	<u>234,786</u>	<u>8,423</u>	<u>243,209</u>

5. Charitable activities

	Unrestricted Funds £	Total Funds 2021 £	Unrestricted Funds £	Total Funds 2020 £
Weddings and funerals	<u>1,015</u>	<u>1,015</u>	<u>790</u>	<u>790</u>

Netherlee and Stamperland (Church of Scotland)

Notes to the Financial Statements *(continued)*

Year ended 31 December 2021

6. Other trading activities

	Unrestricted Funds £	Total Funds 2021 £	Unrestricted Funds £	Total Funds 2020 £
Use of Premises	20,924	20,924	15,401	15,401
Utility Warehouse Scheme	132	132	173	173
	<u>21,056</u>	<u>21,056</u>	<u>15,574</u>	<u>15,574</u>

7. Investment income

	Unrestricted Funds £	Restricted Funds £	Total Funds 2021 £
Dividends Received	8,450	379	8,829
Deposit interest	1,192	–	1,192
Bank interest	–	–	–
	<u>9,642</u>	<u>379</u>	<u>10,021</u>

	Unrestricted Funds £	Restricted Funds £	Total Funds 2020 £
Dividends Received	12,173	878	13,051
Deposit interest	1,796	128	1,924
Bank interest	39	–	39
	<u>14,008</u>	<u>1,006</u>	<u>15,014</u>

8. Other income

	Unrestricted Funds £	Total Funds 2021 £	Unrestricted Funds £	Total Funds 2020 £
Receipts from General Trustees	10,841	10,841	9,864	9,864
	<u>10,841</u>	<u>10,841</u>	<u>9,864</u>	<u>9,864</u>

9. Costs of raising donations and legacies

	Unrestricted Funds £	Total Funds 2021 £	Unrestricted Funds £	Total Funds 2020 £
Costs of raising donations and legacies	193	193	263	263
	<u>193</u>	<u>193</u>	<u>263</u>	<u>263</u>

Netherlee and Stamperland (Church of Scotland)

Notes to the Financial Statements *(continued)*

Year ended 31 December 2021

10. Expenditure on charitable activities by fund type

	Unrestricted Funds		Restricted Funds		Total Funds	
	2021 £	2020 £	2021 £	2020 £	2021 £	2020 £
Analysis of Expenditure						
Raising Funds						
Offering Envelopes	193	263	—	—	193	263
Charitable Activities						
Ministries and Mission Allocation	135,567	160,649	—	—	135,567	160,649
Presbytery Dues	14,686	9,476	—	—	14,686	9,476
Minister's Telephone and Post	1,387	1,064	—	—	1,387	1,064
Pulpit Supply	180	410	—	—	180	410
Other Salary Costs	22,255	22,025	—	—	22,255	22,025
Fabric Repairs & Maintenance	58,072	74,346	—	—	58,072	74,346
Council Tax	3,287	3,242	—	—	3,287	3,242
Heating and Lighting	14,812	14,620	—	—	14,812	14,620
Church Office Expenses	2,766	3,152	—	—	2,766	3,152
Organ & Music	1,662	1,542	—	—	1,662	1,542
Other Expenses	8,785	15,849	4,034	12,903	12,819	28,752
Minister's Travel Expenses	1,239	1,053	—	—	1,239	1,053
Rates and Insurance	9,899	8,942	—	—	9,899	8,942
Printing and Stationery	763	880	—	—	763	880
Payroll fees	439	—	—	—	439	—
Cleaning and Laundry	17,296	12,482	—	—	17,296	12,482
Purchase and Maintenance of Equipment	—	739	—	—	—	739
	293,093	330,471	4,034	12,903	297,127	343,374
Support costs						
Independent examination	1,500	—	—	—	1,500	—
Total	294,788	330,734	4,034	12,903	298,822	343,637

Netherlee and Stamperland (Church of Scotland)

Notes to the Financial Statements *(continued)*

Year ended 31 December 2021

11. Expenditure on charitable activities by activity type

	Activities undertaken directly	Support costs	Total funds 2021	Total fund 2020
	£	£	£	£
Charitable activities	297,129	–	297,129	343,374
Governance costs	–	1,500	1,500	–
	<u>297,129</u>	<u>1,500</u>	<u>298,629</u>	<u>343,374</u>

12. Net gains/(losses) on investments

	Unrestricted Funds	Restricted Funds	Total Funds 2021
	£	£	£
Gains/(losses) on cash held for investment purposes	<u>24,621</u>	<u>(206)</u>	<u>24,415</u>

	Unrestricted Funds	Restricted Funds	Total Funds 2020
	£	£	£
Gains/(losses) on cash held for investment purposes	<u>(23,765)</u>	<u>246</u>	<u>(23,519)</u>

13. Staff costs

The total staff costs and employee benefits for the reporting period are analysed as follows:

	2021	2020
	£	£
Wages and salaries	<u>22,255</u>	<u>22,025</u>

All Church of Scotland congregations contribute to the National Stipend Fund which bears the cost of all ministers' stipend and employer's contributions for national insurance, pension and housing loan fund. Stipends are paid in accordance with the national scale, which is related to years of service. For the year under review, the minimum stipend was £28,700 and the maximum stipend (in the fifth and subsequent years of service) was £35,269.

Netherlee and Stamperland (Church of Scotland)

Notes to the Financial Statements *(continued)*

Year ended 31 December 2021

13. Staff costs *(continued)*

The average head count of employees during the year was 4 (2020: 5).

No employee received employee benefits of more than £60,000 during the year (2020: Nil).

14. Trustee remuneration and expenses

Only the minister and two trustees, [REDACTED], [REDACTED] and [REDACTED], received any remuneration or reimbursement of expenses during the year.

During the year the minister was reimbursed as follows:-

	2021 £	2020 £
Travelling expenses and telephone	2,626	2,117
Manse council tax	3,287	3,423
[REDACTED], Assistant Organist - remuneration	772	1,030
[REDACTED], Cleaning - remuneration	4,649	4,644

No trustee or persons related to a trustee had any personal interest in any contract or transaction entered into by the charity during the year.

During the year a total of £37,650 (2020 - £40,670) was donated to the congregation by trustees; The anonymity of the open bag contributions prevents the church from quantifying trustees' donations included in this category.

15. Tangible fixed assets

	Freehold property £
Valuation	
At 1 January 2021 and 31 December 2021	<u>450,000</u>
Depreciation	
At 1 January 2021 and 31 December 2021	<u>—</u>
Carrying amount	
At 31 December 2021	<u>450,000</u>
At 31 December 2020	<u>450,000</u>

The manse was valued on an open market basis at 31st December 2019 by Corum. The trustees' have agreed that a valuation should be obtained every 3 years.

Netherlee and Stamperland (Church of Scotland)

Notes to the Financial Statements *(continued)*

Year ended 31 December 2021

16. Investments

	Other investments 2021 £	Other investments 2020 £
Market Value		
At 1 January 2021	363,720	409,719
Additions	–	–
Disposals	(4,794)	(22,480)
Fair value movements	24,415	(23,519)
At 31 December 2021	<u>383,341</u>	<u>363,720</u>
Impairment		
At 1 January 2021 and 31 December 2021	<u>–</u>	<u>–</u>
Carrying amount		
At 31 December 2021	<u>383,341</u>	<u>363,720</u>
At 31 December 2020	<u>363,720</u>	<u>409,719</u>

All investments shown above are held at valuation.

There was a gain made of £246 (2020 - £26) on the investments sold in the year.

The following investments are held, at market value

	2021 £	2020 £
Church of Scotland Investors Trust Growth Fund	87,169	82,048
Church of Scotland Investors Trust Income Fund	65,333	66,537
British Government Index Linked Treasury Stock	6,687	6,844
Quoted Shares, Unit/Investment Trust	36,256	33,620
Hargreaves Lansdown	187,896	174,671
	<u>383,341</u>	<u>363,720</u>

17. Debtors

	2021 £	2020 £
Prepayments and accrued income	2,054	2,850
Other debtors	9,694	10,486
	<u>11,748</u>	<u>13,336</u>

18. Creditors: amounts falling due within one year

	2021 £	2020 £
Accruals and deferred income	5,760	4,509
Other creditors	–	1,767
	<u>5,760</u>	<u>6,276</u>

Netherlee and Stamperland (Church of Scotland)

Notes to the Financial Statements *(continued)*

Year ended 31 December 2021

19. Analysis of charitable funds

Unrestricted funds

	At 1 Jan 2021 £	Income £	Expenditure £	Transfers £	Gains and losses £	At 31 Dec 2021 £
General funds	54,561	244,374	(264,228)	7,512	2,043	44,262
Fabric Reserve Fund	268,728	21,555	(24,465)	(3,805)	10,998	273,011
General Legacy fund	256,229	4,561	–	(3,707)	11,580	268,663
Properties Fund	450,000	–	–	–	–	450,000
Organ Fund	5,036	3	–	–	–	5,039
Common Good Fund	10,722	210	(6,095)	–	–	4,837
	<u>1,045,276</u>	<u>270,703</u>	<u>(294,788)</u>	<u>–</u>	<u>24,621</u>	<u>1,045,812</u>

	At 1 Jan 2020 £	Income £	Expenditure £	Transfers £	Gains and losses £	At 31 Dec 2020 £
General funds	71,171	241,613	(261,307)	3,724	(640)	54,561
Fabric Reserve Fund	328,834	16,399	(63,804)	123	(12,824)	268,728
General Legacy fund	253,492	16,885	–	(3,847)	(10,301)	256,229
Properties Fund	450,000	–	–	–	–	450,000
Organ Fund	5,013	23	–	–	–	5,036
Common Good Fund	16,243	102	(5,623)	–	–	10,722
	<u>1,124,753</u>	<u>275,022</u>	<u>(330,734)</u>	<u>–</u>	<u>(23,765)</u>	<u>1,045,276</u>

Netherlee and Stamperland (Church of Scotland)

Notes to the Financial Statements *(continued)*

Year ended 31 December 2021

19. Analysis of charitable funds *(continued)*

General Fund

Dealing with day to day income and expenditure.

Fabric Reserve Fund

Maintenance of the fabric of Church properties.

General Legacy Fund

For the receipt of unrestricted legacies

Designated Properties Fund

Represents the current valuation of the properties. The trustees have agreed that the valuation should be done every 3 years. The current valuation was done in 2019.

Designated Organ Fund

For repairs to the Church organ

Designated Common Good Fund

Makes small donations to very local charities in the fields of education, sports, the arts, children and elderly but not exclusively so.

Restricted funds

	At 1 Jan 2021 £	Income £	Expenditure £	Transfers £	Gains and losses £	At 31 Dec 2021 £
Stained Glass Window Fund	2,560	2	–	–	–	2,562
James Nelson Trust Fund	14,510	72	(2,000)	–	–	12,582
Thomas White Legacy Fund	3,301	–	–	–	–	3,301
Stanley Mair Memorial Fund	16,699	365	–	–	(206)	16,858
Flower Fund	1,265	250	(274)	–	–	1,241

Netherlee and Stamperland (Church of Scotland)

Notes to the Financial Statements *(continued)*

Year ended 31 December 2021

19. Analysis of charitable funds *(continued)*

Sunday Club Fund	2,044	302	(247)	–	–	2,099
Sunday/Wednesday Coffee Fund	3,234	–	(896)	–	–	2,338
The Guild Fund	128	290	(261)	–	–	157
Choir Fund	284	–	(68)	–	–	216
Monday Lunch Club	939	–	(288)	–	–	651
Kean Bequest Fund	1,261	–	–	–	–	1,261
	<u>46,225</u>	<u>1,281</u>	<u>(4,034)</u>	<u>–</u>	<u>(206)</u>	<u>43,266</u>

	At 1 Jan 2020 £	Income £	Expenditure £	Transfers £	Gains and losses £	At 31 Dec 2020 £
Stained Glass Window Fund	2,546	14	–	–	–	2,560
James Nelson Trust Fund	15,027	483	(1,000)	–	–	14,510
Thomas White Legacy Fund	5,890	1,506	(4,152)	–	57	3,301
Stanley Mair Memorial Fund	16,045	465	–	–	189	16,699
Flower Fund	1,297	759	(791)	–	–	1,265
Sunday Club Fund	2,465	960	(1,381)	–	–	2,044
Sunday/Wednesday Coffee Fund	2,862	2,919	(2,547)	–	–	3,234
The Guild Fund	255	1,912	(2,039)	–	–	128
Choir Fund	363	–	(79)	–	–	284
Monday Lunch Club	1,442	411	(914)	–	–	939
Kean Bequest Fund	1,261	–	–	–	–	1,261
	<u>49,453</u>	<u>9,429</u>	<u>(12,903)</u>	<u>–</u>	<u>246</u>	<u>46,225</u>

Netherlee and Stamperland (Church of Scotland)

Notes to the Financial Statements *(continued)*

Year ended 31 December 2021

19. Analysis of charitable funds *(continued)*

Stained Glass Window Fund

To assist in the cost of maintenance and repair of Church windows.

James Nelson Trust Fund

To assist in the promotion of Christian Youth work, particularly those that have an association with Netherlee Church or the Nelson family. Grants totalling £2,000 were awarded during the year.

Thomas White Legacy Fund

Grants to General Congregational Funds of the Church with the power to assist any extra parochial objects, which may need assistance.

Stanley Mair Memorial Fund

To apply the income to fees and expenses incurred by persons invited to lecture on preaching in the Department of Theology at Glasgow University and preach at Netherlee Church.

Flower Fund

To provide flowers for display within the Church.

Sunday Club Fund

To resource and enable the Sunday Club to support various charities.

Sunday/Wednesday Coffee Fund

To purchase commodities for after service coffee with the surplus distributed to charity.

The Guild Fund

Surplus distributed to charities.

Choir Fund

To purchase music and fund resources for the choir.

Monday Lunch Club

To facilitate running of lunch club for dementia sufferers and their carers.

Kean Bequest Fund

To provide elder training.

Netherlee and Stamperland (Church of Scotland)

Notes to the Financial Statements *(continued)*

Year ended 31 December 2021

20. Analysis of net assets between funds

	Unrestricted Funds £	Restricted Funds £	Total Funds 2021 £
Tangible fixed assets	450,000	–	450,000
Investments	372,121	11,220	383,341
Current assets	229,451	32,046	261,497
Creditors less than 1 year	(5,760)	–	(5,760)
Net assets	<u>1,045,812</u>	<u>43,266</u>	<u>1,089,078</u>
	Unrestricted Funds £	Restricted Funds £	Total Funds 2020 £
Tangible fixed assets	450,000	–	450,000
Investments	352,294	11,426	363,720
Current assets	249,259	34,799	284,058
Creditors less than 1 year	(6,276)	–	(6,276)
Net assets	<u>1,045,277</u>	<u>46,225</u>	<u>1,091,502</u>

21. Collections for third parties

	2021 £	2020 £
ER Food Bank	–	167
Sri Lanka Netherlee Cottage	–	1,150
Tear Fund	288	288
LHM	100	–
SE Food Bank	110	–

22. Funds held on behalf of Netherlee and Stamperland (Church of Scotland)

In addition to the assets reflected in the foregoing Financial Statements there are from time-to-time sums held on behalf of Netherlee and Stamperland (Church of Scotland) by the General Trustees of the Church of Scotland. The movements in these funds are shown below. The balance remaining in the hands of the General Trustees of Scotland at 31 December 2021 is £1,877 (2020 - £2,916)

	2021 £	2020 £
Revenue Account		
Credit Balance at 31st December	<u>1,877</u>	<u>2,916</u>

23. Volunteers

In common with all congregations of the Church of Scotland the congregation benefits from the contribution made by volunteers who give their time and talents willingly for the benefit of the church. The areas of congregational life which rely on the contribution of the volunteers are many and varied and much of the activity would be unable to continue were it not for the commitment shown.

24. Independent examination fees

	2021 £	2020 £
Fees payable to the independent examiner for:		
Independent examination of the financial statements	<u>1,500</u>	<u>–</u>

Netherlee and Stamperland (Church of Scotland)

Management Information

Year ended 31 December 2021

The following pages do not form part of the financial statements.

Netherlee and Stamperland (Church of Scotland)

Detailed Statement of Financial Activities

Year ended 31 December 2021

	2021 £	2020 £
Income and endowments		
Donations and legacies		
Weekly Freewill Offering	21,994	24,598
Gift Aid	145,914	153,417
Ordinary Offering	4,346	2,995
Tax Recovered on Gift Aid	37,377	39,187
Contribution from Congregational Organisations	222	1,620
Organisational income	843	6,961
Other	15,747	3,964
Legacies	2,608	10,467
	<u>229,051</u>	<u>243,209</u>
Charitable activities		
Weddings and funerals	1,015	790
Other trading activities		
Use of Premises	20,924	15,401
Utility Warehouse Scheme	132	173
	<u>21,056</u>	<u>15,574</u>
Investment income		
Dividends Received	8,829	13,051
Deposit interest	1,192	1,924
Bank interest	–	39
	<u>10,021</u>	<u>15,014</u>
Other income		
Receipts from General Trustees	10,841	9,864
	<u>10,841</u>	<u>9,864</u>
Total income	<u><u>271,984</u></u>	<u><u>284,451</u></u>

Netherlee and Stamperland (Church of Scotland)

Detailed Statement of Financial Activities *(continued)*

Year ended 31 December 2021

	2021 £	2020 £
Expenditure		
Costs of raising donations and legacies		
Giving Envelopes	193	263
Expenditure on charitable activities		
Legal and professional fees	1,500	–
Ministries & Mission Allocation	135,567	160,649
Presbytery Dues	14,686	9,476
Minister's Telephone and Post	1,387	1,064
Pulpit Supply	180	410
Other Salary costs	22,255	22,025
Fabric Repairs and Maintenance	58,072	74,346
Council Tax	3,287	3,242
Heating and Lighting	14,812	14,620
Church Office Expenses	2,766	3,152
Organ and Music	1,662	1,542
Other Expenses	10,784	28,752
Minister's Travel Expenses	1,239	1,053
Rates and Insurance	9,899	8,942
Printing and Stationery	763	880
Payroll Fees	439	–
Organisational Expenditure	2,035	–
Cleaning and Laundry	17,296	12,482
Purchase and Maintenance of Equipment	–	739
	<u>298,629</u>	<u>343,374</u>
Total expenditure	<u>298,822</u>	<u>343,637</u>
Net gains/(losses) on investments		
Gains/(losses) on cash held for investment purposes	24,415	(23,519)
Net expenditure	<u>(2,423)</u>	<u>(82,705)</u>

Netherlee and Stamperland (Church of Scotland)

Notes to the Detailed Statement of Financial Activities

Year ended 31 December 2021

	2021 £	2020 £
Costs of raising donations and legacies		
Costs of raising donations and legacies		
Giving Envelopes	193	263
	<u> </u>	<u> </u>
Costs of raising donations and legacies	<u>193</u>	<u>263</u>
Expenditure on charitable activities		
Charitable activities		
<i>Activities undertaken directly</i>		
Ministries & Mission Allocation	135,567	160,649
Presbytery Dues	14,686	9,476
Minister's Telephone and Post	1,387	1,064
Pulpit Supply	180	410
Other Salary costs	22,255	22,025
Fabric Repairs and Maintenance	58,072	74,346
Council Tax	3,287	3,242
Heating and Lighting	14,812	14,620
Church Office Expenses	2,766	3,152
Organ and Music	1,662	1,542
Other Expenses	10,784	28,752
Minister's Travel Expenses	1,239	1,053
Rates and Insurance	9,899	8,942
Printing and Stationery	763	880
Payroll Fees	439	–
Organisational Expenditure	2,035	–
Cleaning and Laundry	17,296	12,482
Purchase and Maintenance of Equipment	–	739
	<u>297,129</u>	<u>343,374</u>
Governance costs		
Governance costs - accountancy fees	1,500	–
	<u> </u>	<u> </u>
Expenditure on charitable activities	<u>298,629</u>	<u>343,374</u>